

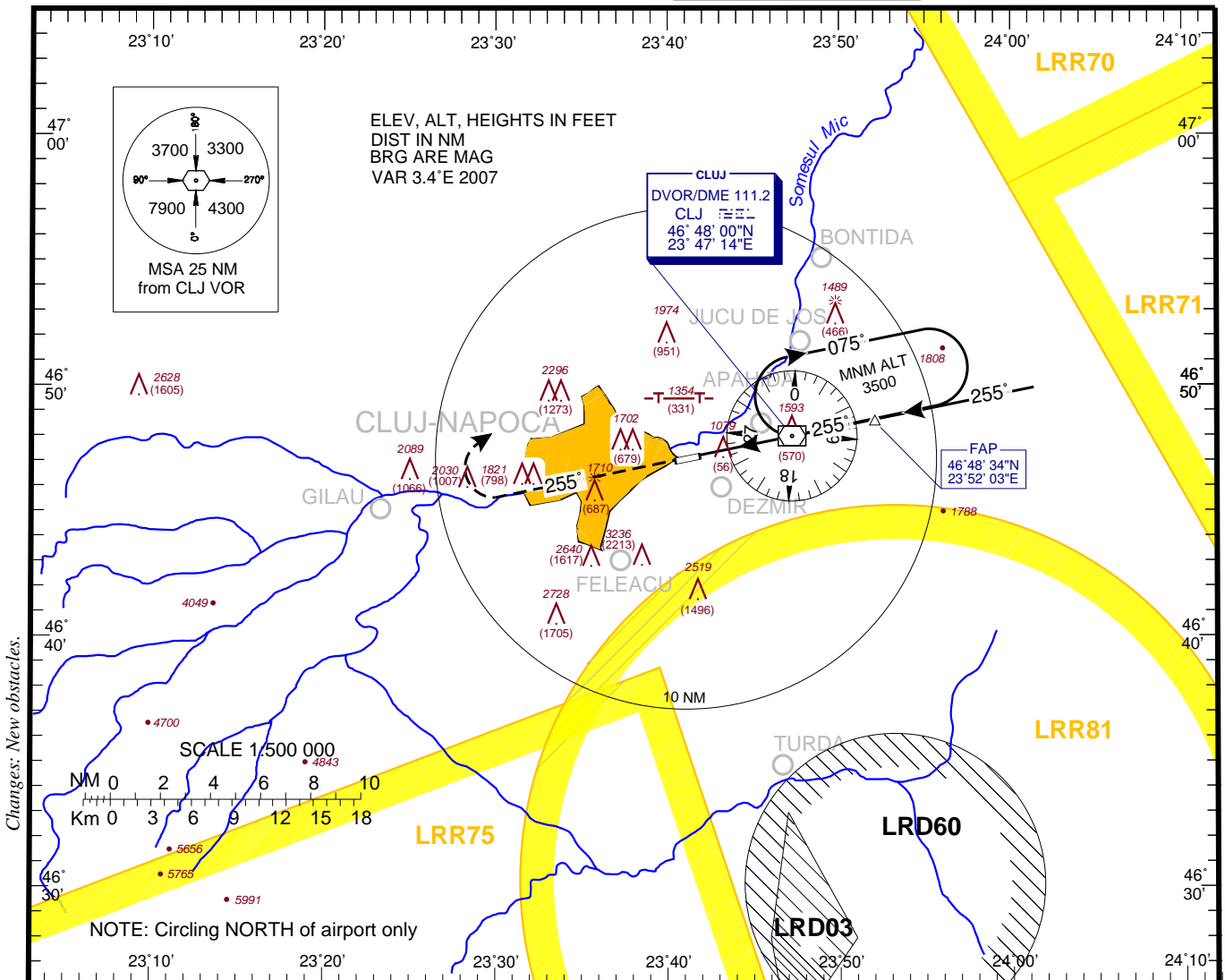
AERODROME ELEV. 1035 ft
HEIGHTS RELATED TO
THR RWY 26 - ELEV 1023

CLUJ-NAPOCA / Cluj Napoca (LRCL)

**INSTRUMENT APPROACH
CHART - ICAO**

Cluj Approach/Radar 125.1
Cluj Precision 118.7
Cluj Tower 134.4

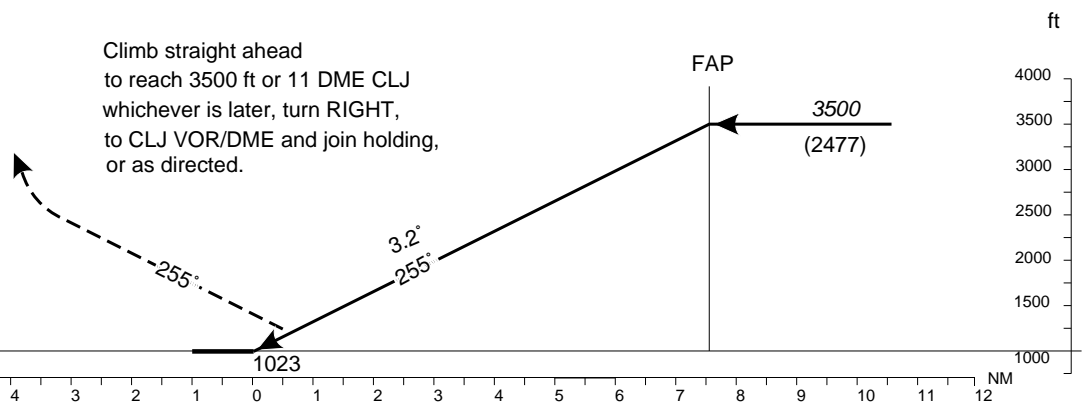
**PAR
RWY 26**



MISSED APPROACH

Transition Altitude
4000

Climb straight ahead
to reach 3500 ft or 11 DME CLJ
whichever is later, turn RIGHT,
to CLJ VOR/DME and join holding,
or as directed.



OCA/H	A	B	C	D
PAR Straight-in approach		1223 (200)		
Circling	1710		2120	

Dist to THR	NM	1	2	3	4	5	6	7
Altitudes (Heights)	ft	1418 (395)	1757 (734)	2097 (1074)	2437 (1414)	2776 (1753)	3116 (2093)	3456 (2433)

CLUJ-NAPOCA / Cluj-Napoca (LRCL)
PAR RWY 26

AERONAUTICAL DATA TABULATION

PAR Approach to RWY 26 from CLJ DVOR DME	
Fix/Point	Coordinates
CLJ DVOR DME (IAF)	46°48'00.4"N 023°47'14.1"E
FAP/FAF GP INOP – BRG 256.91 / 3.36NM CLJ	46°48'34.4"N 023°52'03.4"E
THR 26	46°47'12.09"N 023°41'52.53"E